

abbotFox



Whispering Oaks

Wymondham, NR18

“It’s an incredibly sociable home and ideal for our family with amenities and schools nearby.”

From our sellers





Introduction

This five bedroom home arranged over three floors has been thoughtfully extended and improved. It's low maintenance and very versatile.

Inside

Light and airy living spaces dominate all floors, which extend to around 1,700 sq ft. The main living spaces are accessed off a reception hall on the ground floor and include a huge open-plan kitchen/dining/living space fitted with a stylish kitchen with bi-fold doors to the garden, plus a smaller, more intimate sitting room accessed through a set of glazed French doors.

There is also a useful utility room and WC on the ground floor.

The first and second floors provide five bedrooms and a dressing room. The principal bedroom features an en suite. There is a family bathroom off of the second floor landing also.

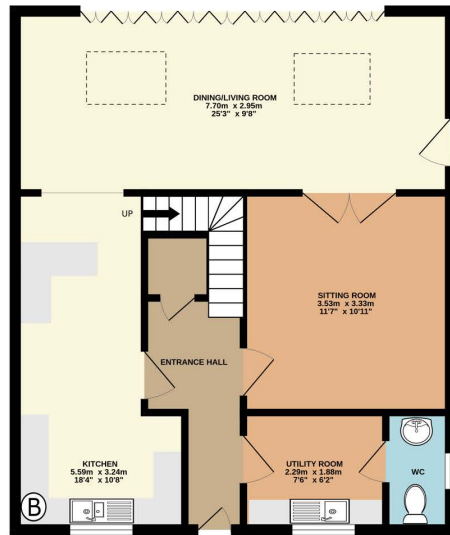
Outside

There is parking to the front as well as a driveway and garage to the side. To the rear, a good-sized garden is fully enclosed and is complete with a large sun terrace. Synthetic grass makes this an easy space to manage.

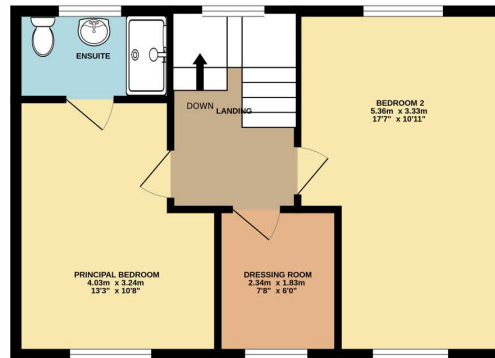




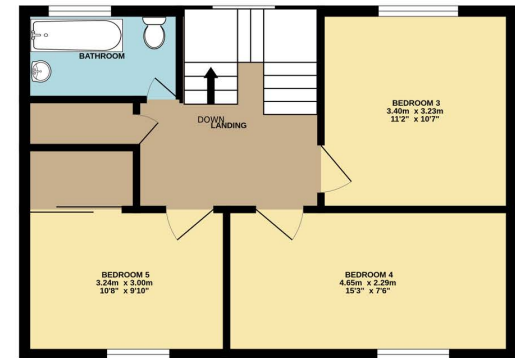
GROUND FLOOR
GROUND FLOOR



1ST FLOOR
1ST FLOOR



2ND FLOOR
2ND FLOOR



Whilst every attempt has been made to ensure the accuracy of the floorplan contained here, measurements of doors, windows, rooms and any other items are approximate and no responsibility is taken for any error, omission or mis-statement. This plan is for illustrative purposes only and should be used as such by any prospective purchaser. The services, systems and appliances shown have not been tested and no guarantee as to their operability or efficiency can be given.
Made with Metropix ©2024

Location

Wymondham is a popular market town in south Norfolk which combines all the amenities a thriving town could need with the picturesque beauty of the countryside and a fascinating history.

Its most famous landmark is its Abbey, which was founded over 900 years ago. While much of the original town centre was sadly damaged by fire in 1615, it still offers a number of quirky and historical buildings, a wide range of independent shops and eateries and regular markets.

The town is well-connected by both road and rail. The A11 is easily accessible, connecting the town to Norwich and Thetford, while Wymondham Railway Station provides direct services to Norwich and Cambridge. There are also regular buses.

Families

Wymondham is very popular with families and this property is no exception. All schools are within walking distance. Wymondham College, the UK's largest co-educational state boarding and day school, can also be found in nearby Morley.

The town itself hosts a number of festivals and events throughout the year and has great leisure facilities, including a swimming pool, gym, tennis club and Ketts Park, which has a large play area and recreation ground.



Our agent's view

"This a really great family home and offers so much flexibility. The open plan living space is seriously impressive and will, I'm sure, be a major draw for buyers.

Wymondham is an incredibly popular market town and having grown up there myself I can fully understand why it is so highly regarded, especially by families."

Samuel Le Good | Partner

Agent's Details



Samuel Le Good | Partner

samuellegood@abbotfox.co.uk | 01603 660000 | 07915 660981 | @samuellegood

Kingsley House
2a Upper King Street
Norwich
NR3 1AH



Disclaimer - In accordance with the Property Mis-descriptions Act, the company gives notice that all descriptions, references to condition, necessary permissions for use and other details are given in good faith and believed to be correct, but any intending lessees do not rely on them statements of fact, but must satisfy themselves by inspection or other means, as to their accuracy